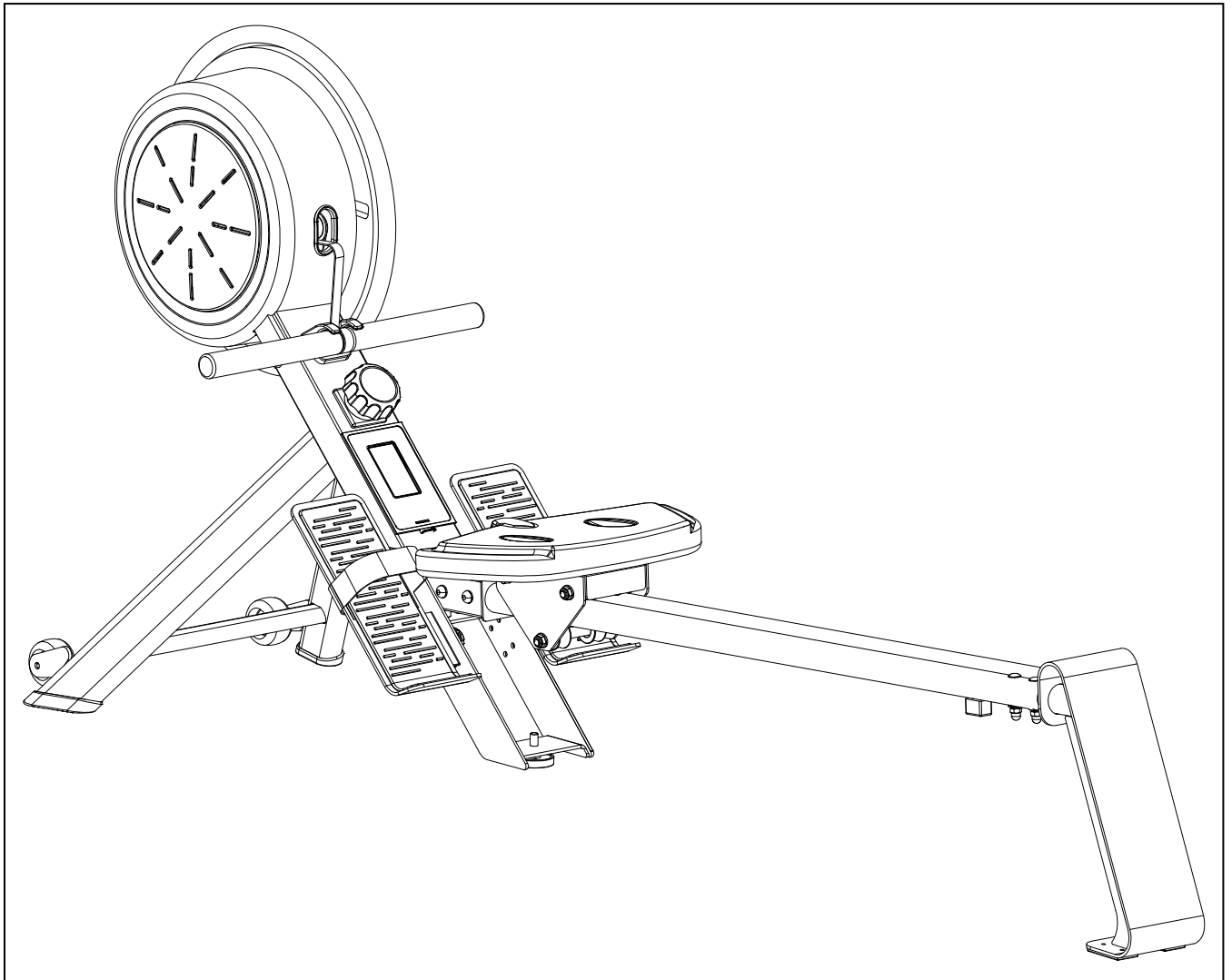
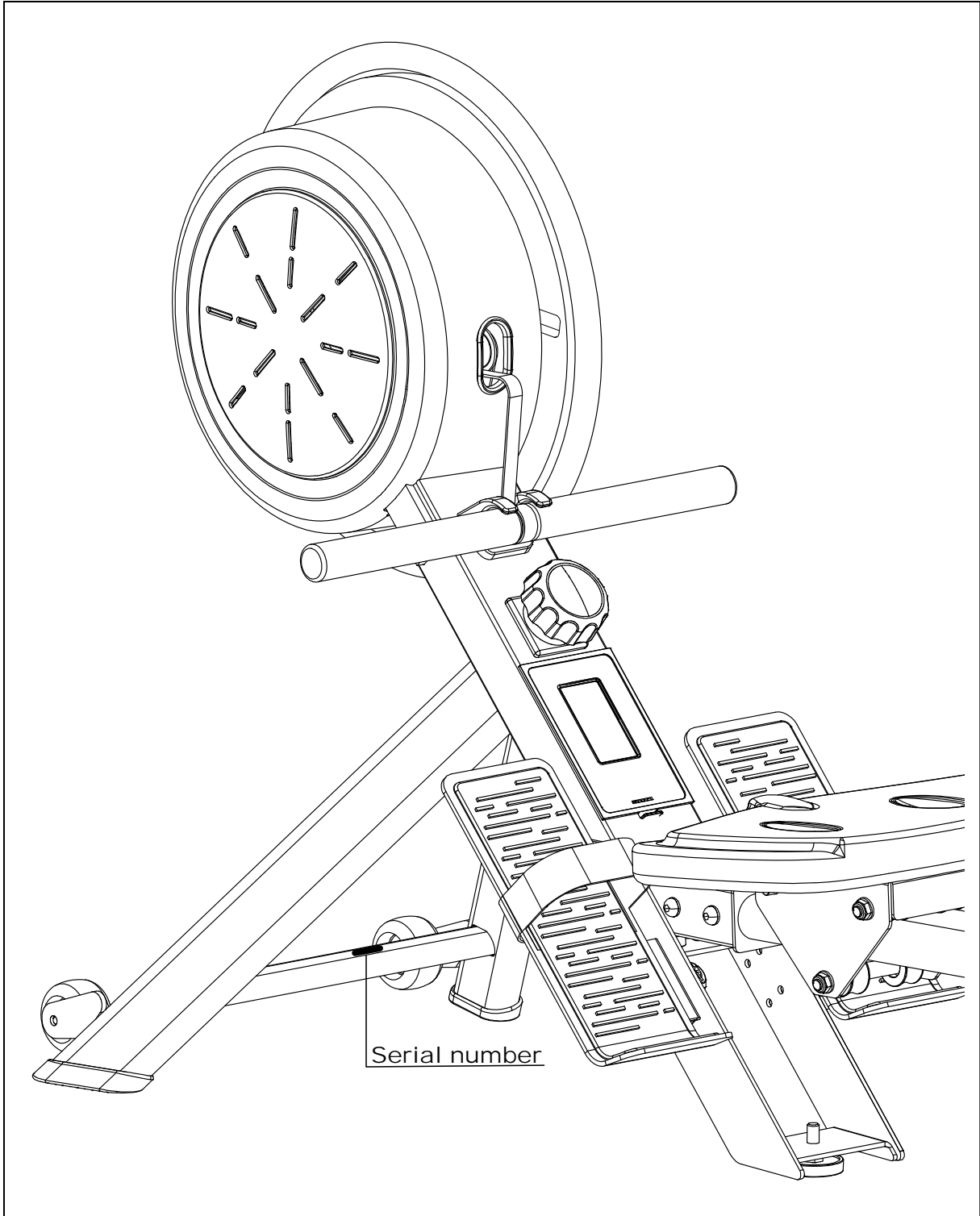


Casall 1.3R Manual

ROWER MACHINE

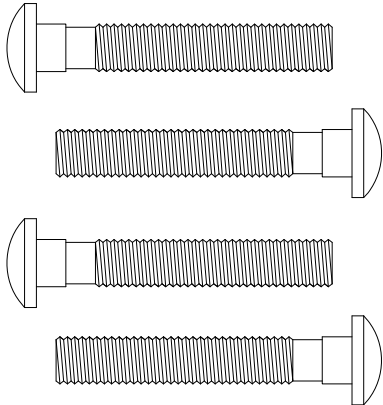
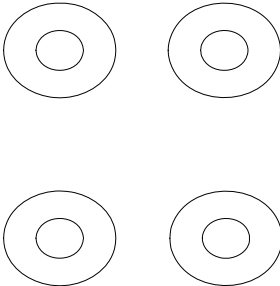
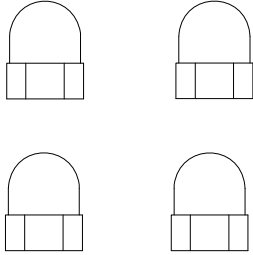
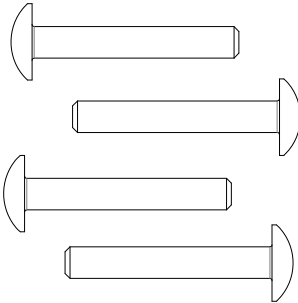
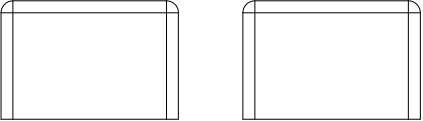
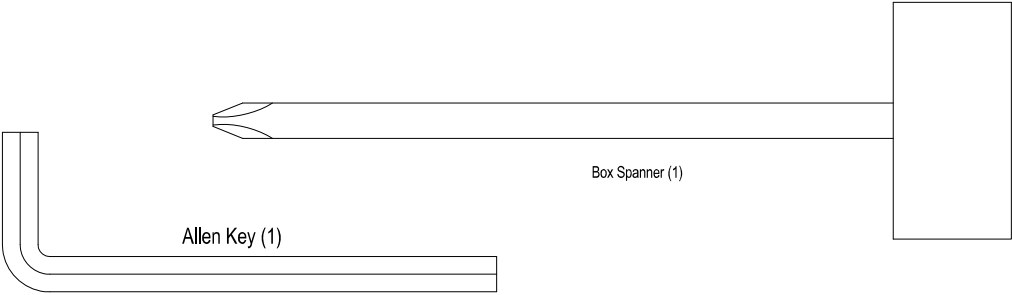



- Important: Please locate your serial number and record in the box below for service support purposes.



- Serial number here:

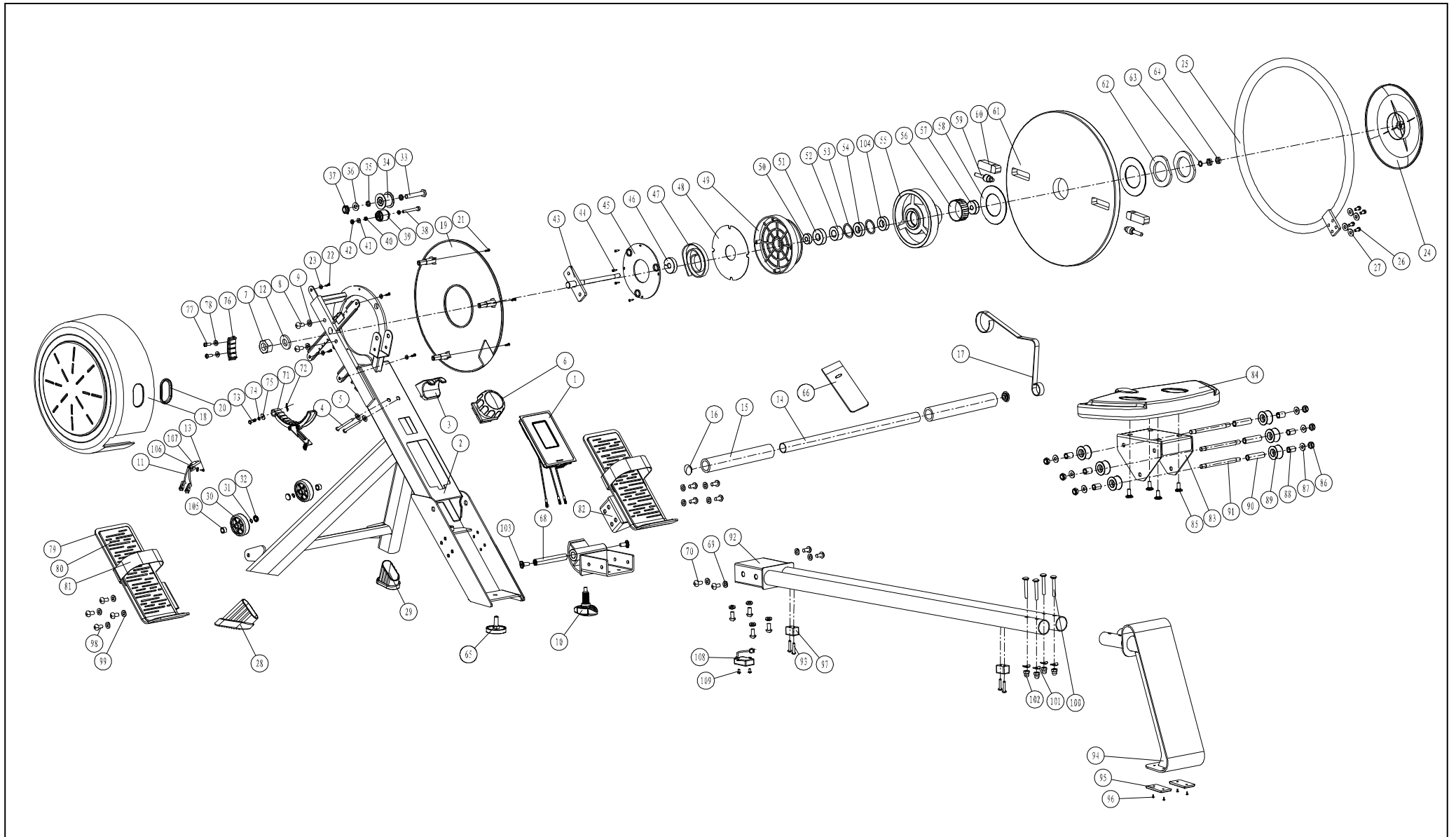
Infinity 1.3R

 <p>100 Carriage Bolt M8*P1.25*50MM (4)</p>	 <p>101 Curved washer for Ø 8 * Ø 19 * 2T bolt (4)</p>	 <p>102 Acorn Nut for M8 Bolt (4)</p>	 <p>93 Screw M5*35L(4)</p>
 <p>97 CAP(2)</p>	 <p>Allen Key (1)</p> <p>Box Spanner (1)</p>		



(MM)

EXPLODED DIAGRAM



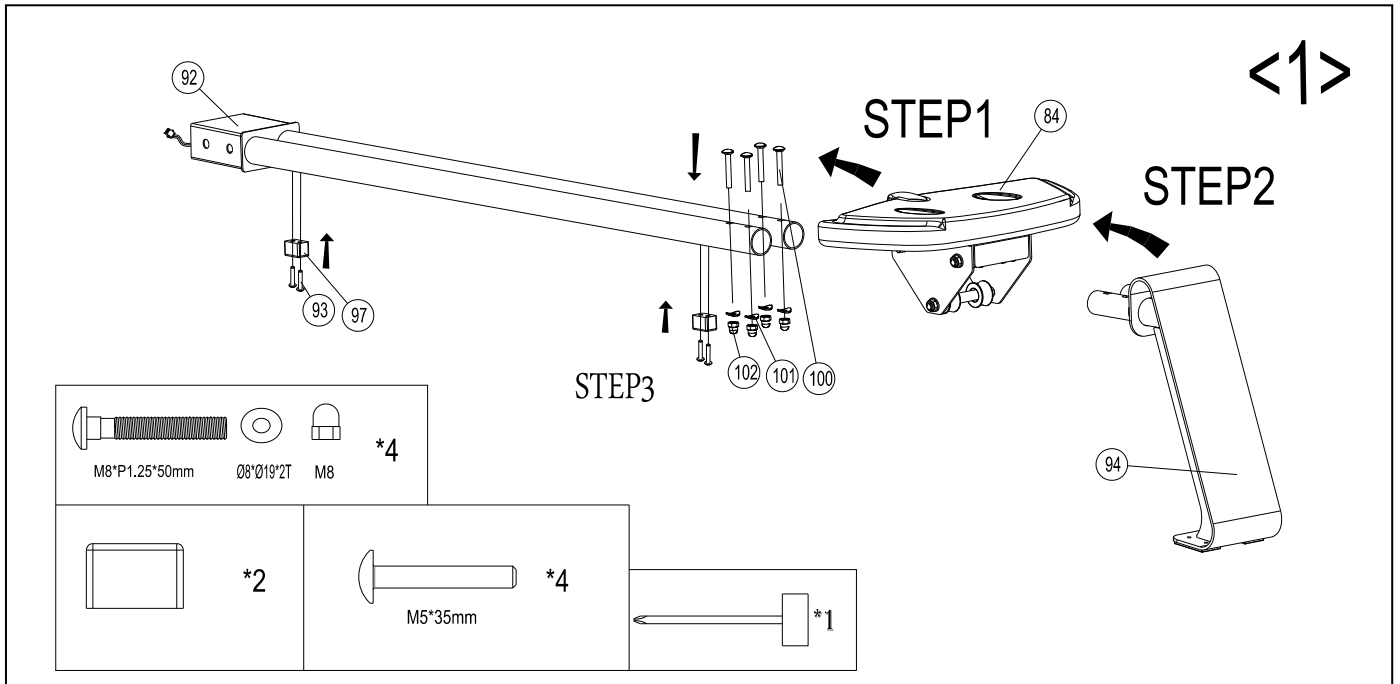
Parts List

NO	Description	Specification	Q'ty	
1	Console		1	SET
2	Main frame		1	SET
3	Fixing set for handlebar		1	PCS
4	Screw	M4x50L	2	PCS
5	Flat washer	φ5xφ13x1t	2	PCS
6	Tension controller		1	PCS
7	Hex. Nut	M16	1	PCS
8	Screw	M8xP1.25x20L(6m/m)	2	PCS
9	Flat washer	φ8xφ16x2t	2	PCS
10	Adjusting knob	M16*P1.5*32L	1	PCS
11	Sensor box		1	PCS
12	Flat washer	φ17.5xφ25x2t	1	PCS
13	Screw	M3x8L	1	PCS
14	Handlebar		1	PCS
15	Foam grip for handlebar		2	PCS
16	End cap for handlebar		2	PCS
17	Inkle	3300mmx14.5Wx1.0T	1	PCS
18	Chain cover (left)		1	PCS
19	Chain cover (right)		1	PCS
20	Sleeve for chain cover		1	PCS
21	Screw	M4x40L	3	PCS
22	Screw	M5x16L	4	PCS
23	Flat washer	φ5xφ13x1t	4	PCS
24	Cover for flywheel		1	PCS
25	Tube for glass flywheel		1	PCS
26	Hexagon socket head bolt	M6xP1.0x10L	4	PCS
27	Flat washer	φ6xφ13x1t	4	PCS
28	End cap for front tubing(left)		1	PCS
29	End cap for front tubing(right)		1	PCS
30	Transportation wheel		2	PCS
31	C clip	φ8	2	PCS
32	Nut	M8	2	PCS
33	Hex. Bolt	3/8"x61mm	1	PCS
34	Small pulley	(Bearing 6900RS*2PCS)	1	PCS
35	Bushing	φ10	2	PCS
36	Flat washer	φ10	2	PCS
37	Nylon nut	3/8"x7t	1	PCS
38	Hex. Bolt	M6x50L	1	PCS
39	Roller for inkle		1	PCS
40	Bushing	φ6.2*φ9*3T	2	PCS
41	Flat washer	φ6xφ12x1t	1	PCS
42	Nylon nut	M6	1	PCS
43~50	Spring box set		1	SET
51~57	Flywheel set		1	SET
58~64	Glass flywheel set		1	SET

65	End cap for main frame		1	PCS
66	Velcro for handlebar		1	PCS
67	Connector holder		1	PCS
68	Axle for connector	φ16*105L	1	PCS
69	Flat washer	φ8xφ16x2t	8	PCS
70	Screw	M8xP1.25x20L(6m/m)	8	PCS
71	Magnet assembly set		1	PCS
72	Wave washer	φ12.5xφ18x0.3t	1	PCS
73	Hex. bolt	M6xP1.0*16L (鍍)30#	1	PCS
74	Spring washer		1	PCS
75	Flat washer	φ6xφ13x1t	1	PCS
76	Magnet set		1	PCS
77	Screw	M5x8L	2	PCS
78	Flat washer	φ6xφ13x1t	2	PCS
79	Pedal (left)		1	PCS
80	Pad for pedal (R, L)		2	PCS
81	Pedal strap (R, L)		2	PCS
82	Pedal (right)		1	PCS
83	Rolling slider		1	PCS
84	Seat		1	PCS
85	Screw	M8x16	4	PCS
86	Star nut		6	PCS
87	Flat washer	φ10xφ18x1t	6	PCS
88	Bushing	φ10*φ14*19L	3	PCS
89	Roller wheel		6	PCS
90	Bushing	φ10xφ14*54L	3	PCS
91	Axle for roller		3	PCS
92	Slippery rail		1	PCS
93,97.100~102	Bolts & nuts pack		1	SET
94	Rear foot		1	PCS
95	End cap for rear foot		2	PCS
96	Screw	M5x8L	4	PCS
98	Screw	M8xP1.25x16L(6m/m)	8	PCS
99	Flat washer	φ8xφ16x2t	8	PCS
103	Hex. Bolt	M8x16	2	PCS
104	Bearing	6201 (RS)	1	PCS
105	Bushing	φ8.5*φ12.5*5mm	2	PCS
106	Flat washer	φ5xφ10x1t	1	PCS
107	Sensor holder		1	PCS
108	Wireless receiver for pulse		1	PCS
109	Screw	M4x8L	2	PCS

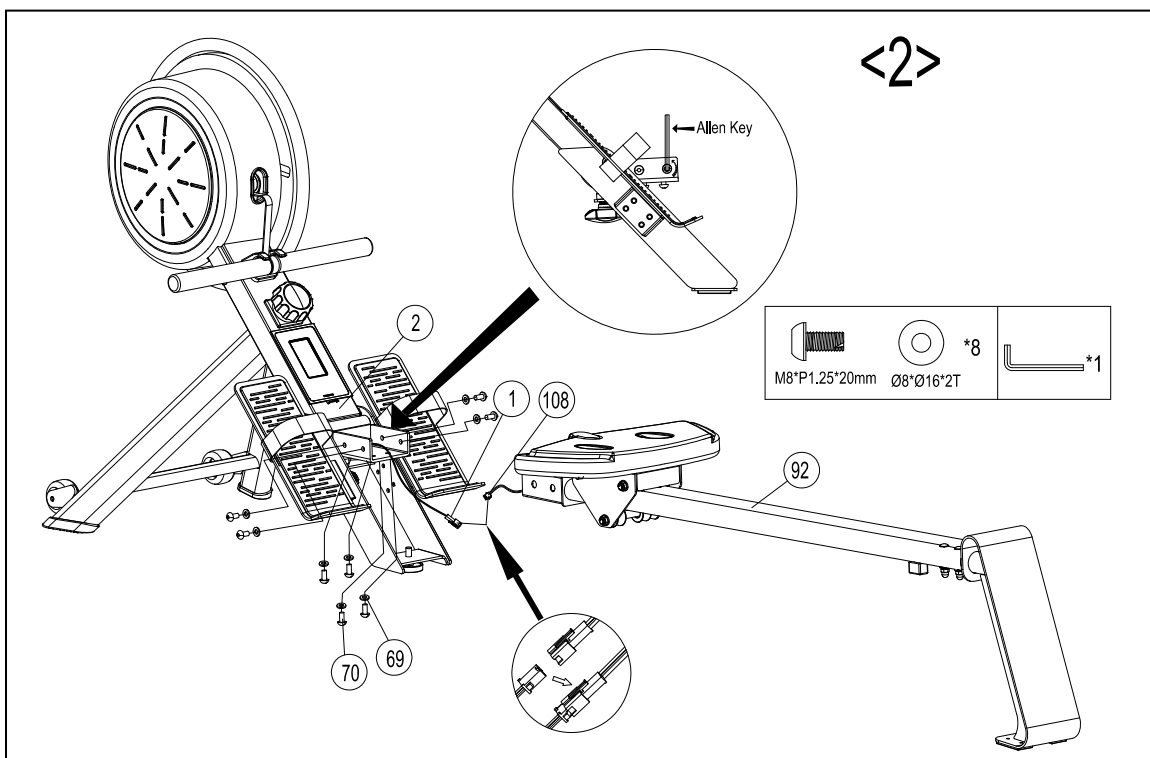
Assembly step 1:

- Step 1: Please remove the M5x35L screw (93) on the slippery rail (92).
Step 2: Slide the seat (84) on the slippery rail (92) and fasten the stopper (97) with the screws (93).
Step 3: Push the back rear foot (94) in the slippery rail (92). Use for this the carriage bolt (100), curve washers (101) and nuts (102).



Assembly step 2:

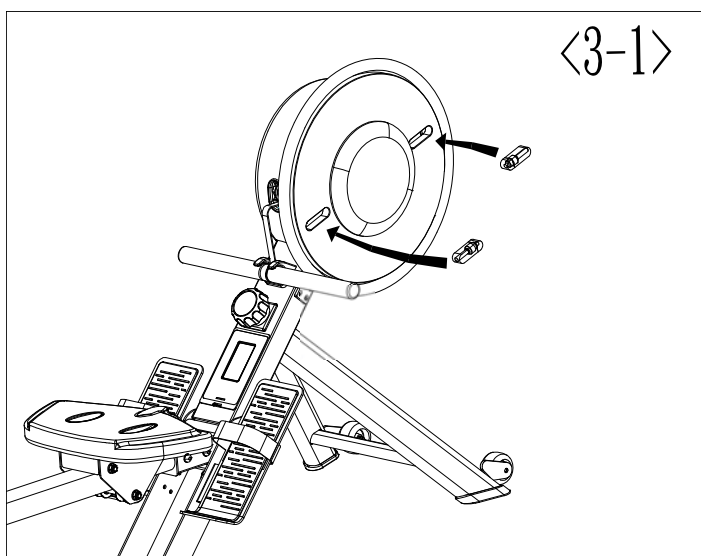
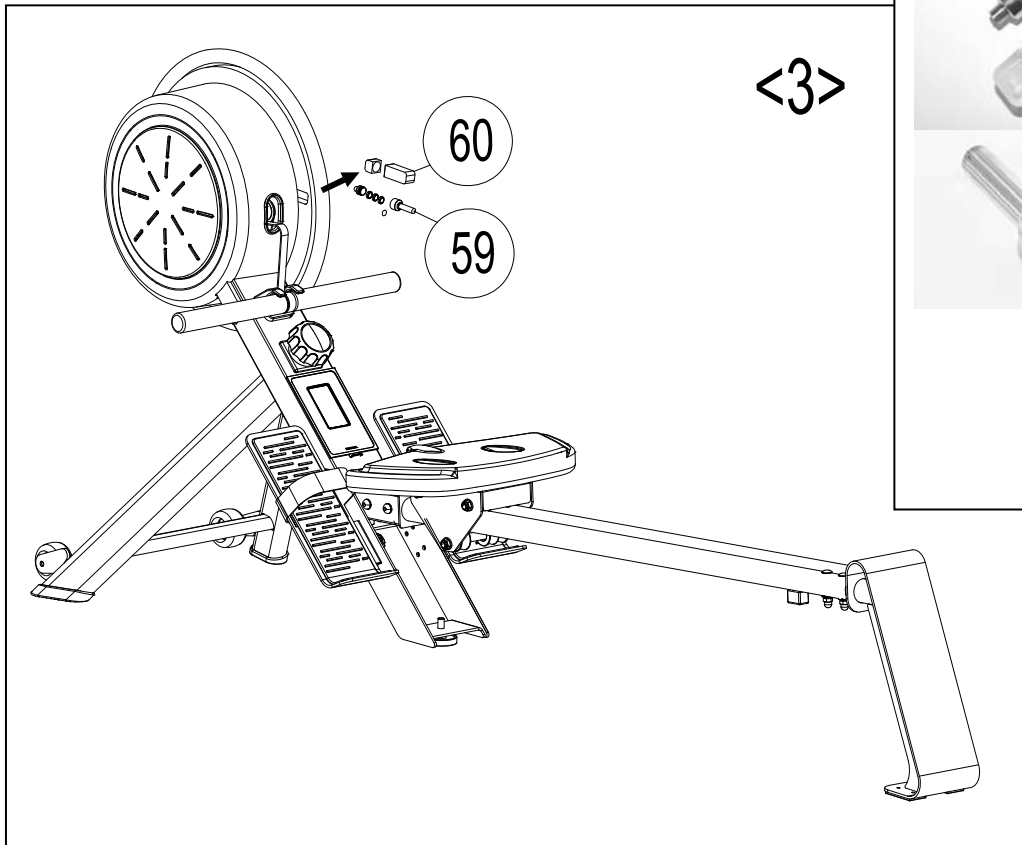
- Step 1 Please remove the M8xP1.25x20L screw (70) and flat washer (69) on the main frame (2).
Step 2: Connect wireless receiver for pulse wire (108) and console pulse wire (1).
Step 3: Push the slippery rail (92) in the main frame (2). Fasten it with the screws (70) and the flat washer (69).



Additional: 2 LED Lights:

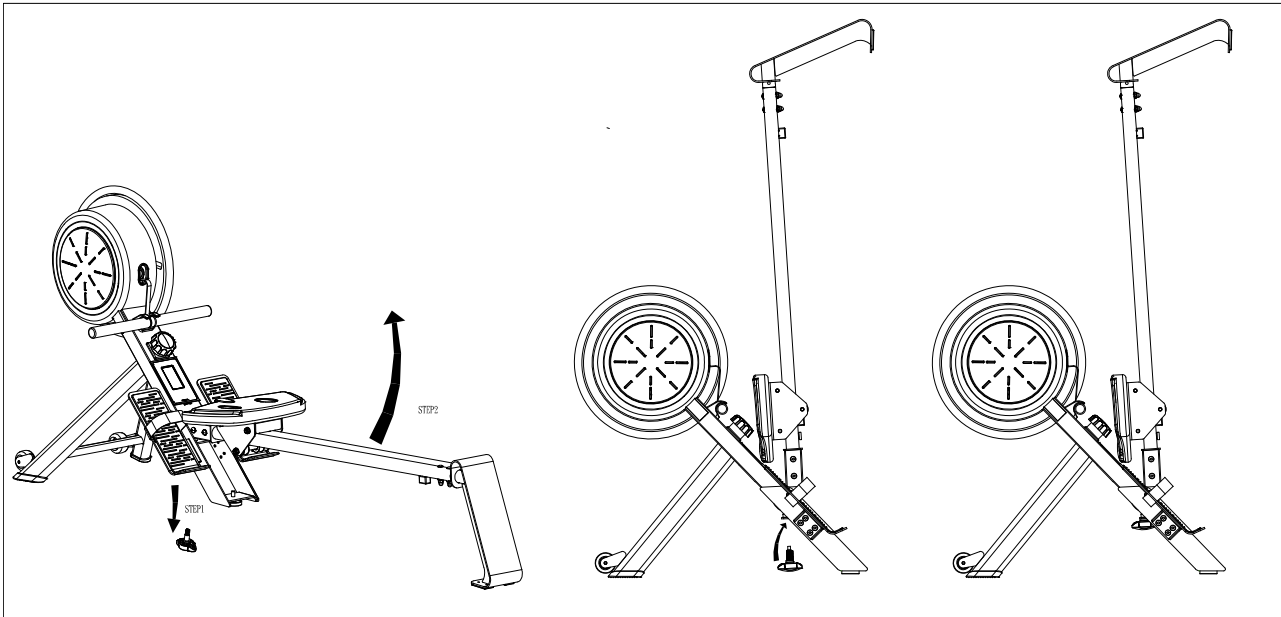
Activation:

1. Open the protecting cover from the LED light
2. Open the LED light
3. Remove the contact protection between spring and battery
4. Close the LED light
5. Put the lights into the glass flywheel opening



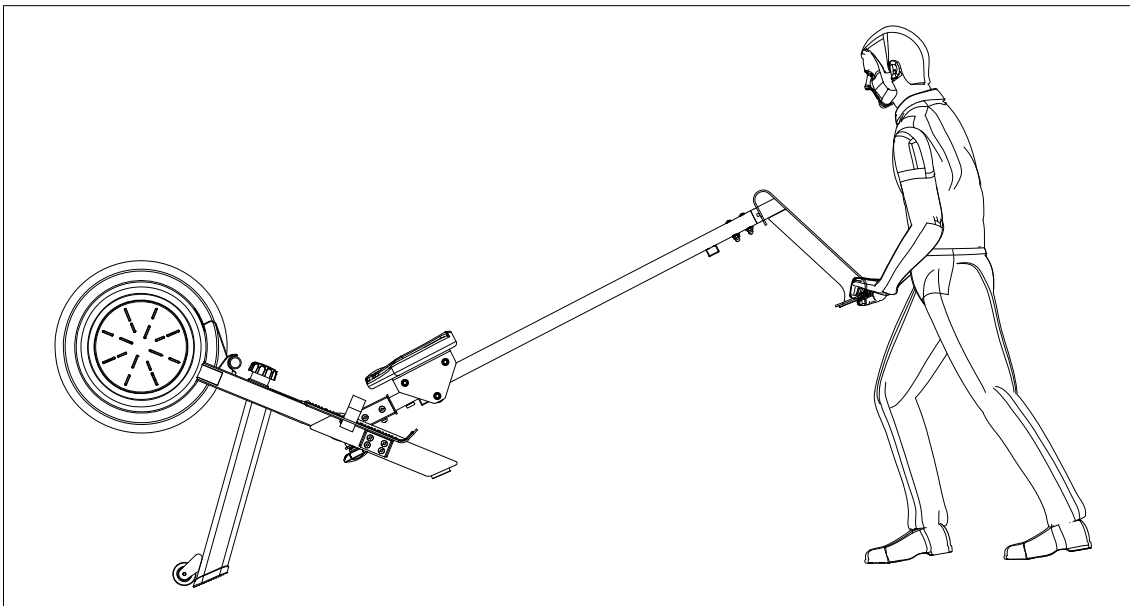
Folding instructions

1. Release the adjusting knob (10) and put out the rail (92), then pull the rail out.
2. Turn the rail 90 degree then inert the rail into the notch on the frame
3. Use the knob to lock the rail onto the frame.



Moving instructions

Rise up the rear stabilizer and push the rower machine when you want to move it.



Installing the batteries

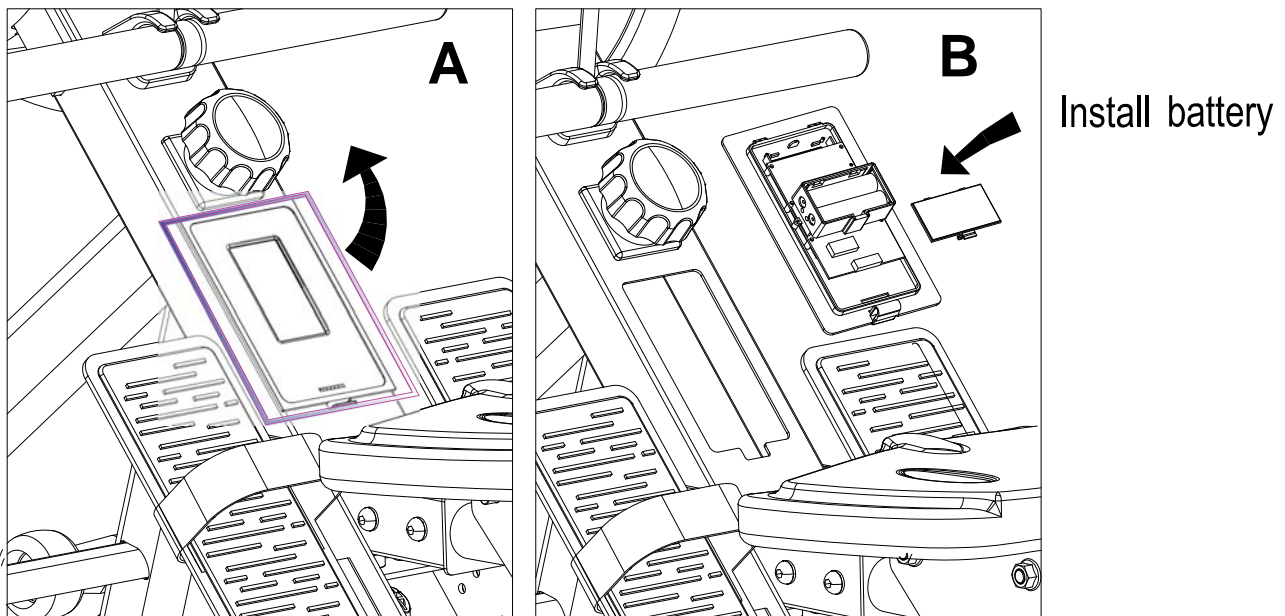
Figure A: Push the catch attached to the bottom of the computer slightly upwards and remove the console (1) from the holder.

Figure B: The console (1) can use two AA batteries (not 11 included); alkaline batteries are recommended.

→ Reattach the computer by first inserting the top part into the holder and then the bottom part of the computer until you hear the catch click into position (Figure A).

Remove the batteries from the battery compartment if they are empty or if the equipment is not to be used for a long period of time.

Batteries are hazardous waste and must be disposed of properly.



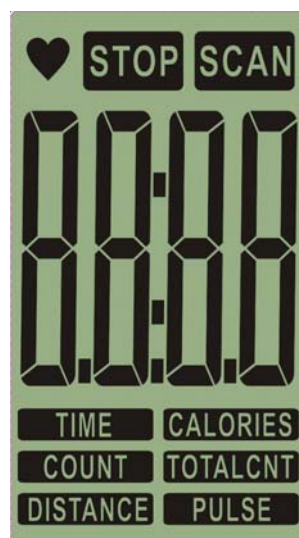
Instruction Manual of ST3665-64

!!! For simple exercise, it is not always necessary to select a training program or manually set the TIME, DISTANCE or other values. You can simply start pedaling .



As soon as user install batteries, computer will power on and LCD full display all segments then enter into the SCAN function mode after one second. Press the MODE key to select function. When there is pedaling signal transmitted to the console without pressing any key, console starts to work, all function TIME/COUNT/TOTAL CNT/DISTANCE/CALORIES will start to count up automatically.

If no buttons are pressed and the pedals have not been moved for 4 minutes, the computer will switch to Standby mode. All setting and exercise data will be saved until user start exercise again.



【DISPLAY & BUTTON FUNCTIONS】

Training Values	Display Range	Setting Range
TIME	00:00 ~99:59 min.	0:00~99:00 min.
COUNT	0 ~9999	0~9990
TOTAL CNT	0 ~9999	/
DISTANCE	0~99.99 KM	0:00~99.90 KM
CALORIES	0~9999 Cal	0~9990 Cal
PULSE	40~240 bpm	0-40~240 bpm

BUTTON	FUNCTION
MODE	-Confirm setting -Select function & lock single function display. -Clear all values if hold on pressing it for 3 seconds.
SET	-To set up workout value for: . TIME setting range: 0:00~99:00 (Each increment is 1:00) . CALORIES setting range: 0~9990 (Each increment is 10) . CNT setting range:0~9990 (Each increment is 10) . DISTANCE setting range: 0~99.90 (Each increment is 0.1) . PULSE setting range: 0-40~240 -To adjust TIME/ DISTANCE/CALORIES/PULSE value up when stop exercising. -In STOP mode, hold on this button will increase values fast as Hot key.
RESET	-Press it for single RESET each function: TIME,DISTANCE,CALORIE and PULSE. -Hold on for 3 seconds to reboot the computer along with Bi sound for prompt at the same time.

Training Data

The computer calculates and displays all values automatically according to user training status.

Operation Instruction

Press MODE button to select function to be set, the following function will be display in sequence:

- * SCAN- Automatically scan through each mode in sequence each 6s. The display loop is CAN →TIME→COUNT→CALORIES→TOTAL CNT→DISTANCE→PULSE→SCAN.
- * TIME – Press the SET key to set target exercise TIME, each time it will increase by 1:00. With setting the target value, TIME will count down from your target time to 0, and as 0 is achieved TIME alarm; W/O setting the target value, TIME will count up. W/O exercise for 4 minutes, **STOP** icon will shows up.
- * COUNT– When user start to pedal with bike, LCD will display exercising movements. With setting the target value, COUNT will count down from your target count number to 0, as 0 is achieved COUNT alarm; W/O setting the target value, COUNT will count up.
- * CALORIES – Press SET key to set target CALORIES, each time it will increase by 10cl. With setting the target value, calories will count down from your target calorie to 0, and as 0 is achieved calorie alarm; W/O setting the target value, calorie will count up.
(This data is a rough guide for comparison of different exercise sessions, which can not be used in medical treatment.)
- *TOTAL CNT- This function cannot be preset. When user start to pedal with bike, LCD will display current Total exercise movements. TOTAL COUNT value will be cleared after battery removed.
- * DISTANCE - Press SET key to set target exercise Distance, each time it will increase by 0.5Km. With setting the target value, distance will count down from your target distance to 0,

and as 0 is achieved distance alarm; W/O setting the target value, distance will count up.

- * PULSE - The computer will display user's Heart rate while exercising. When you start exercising, you have to wear chest belt. After 6-7 seconds, the PULSE figure will display. Without pulse signal input for 6s, it displays "P" in PULSE window. Pulse will alarm when over preset target pulse.

Take Note:

- * When the display of LCD is weak, it means the batteries need to be changed.
- * If there is no signal or improper display on monitor, please check if the cable is well connected.
- * Battery spec: 1.5V UM-3 OR AA(2PCS)